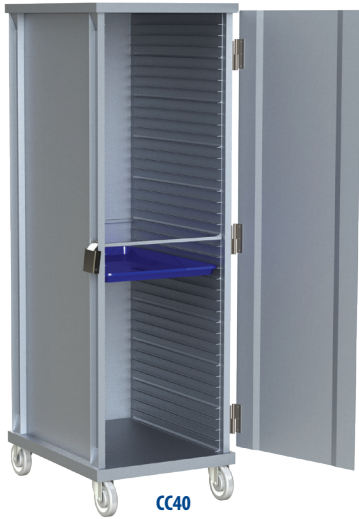


# CC – ALUMINUM ENCLOSED CABINET



**CC40**  
Solid Door



**CC40-CD**  
Clear Door



**CC16**  
Solid Door



**CC24-CD**  
Clear Door

### Construction

- Constructed of Heavy-Duty extruded 6063 aluminum alloy
- Stainless Hardware
- Designed for 18" x 26" Trays
- Available in 1" or 1.5" Shelf Spacing Configurations
- Full & Half Size Mobile Units
- Door Swings 270 degrees with Stainless Steel Gravity Latch
- Solid Door Standard
- Available with Clear Door Option
- Fully Welded Assembly for Strength
- Custom Sizes Available

### Frame

- Uprights are 2.5" x 1" channel
- Door, and base are 1/8" solid aluminum
- Top and rear panel are constructed from .090" solid aluminum
- Center support brace (full size only)
- Side ledge panels are tongue and groove with 1" or 1.5" spacing

### Casters

- High Quality 5" Poly-U Casters for easy maneuverability
- Casters bolted to reinforced wheel channel



**-620U**  
6" x 2" Heavy Duty  
Poly Urethane Casters  
Upgrade Option

**EXAMPLE: CC40-CD620U** (Enclosed Cabinet, 40 Pan Cap. [23"W x 28"D x 70"H, 1.5" Runner Spacing], with Clear Door and 6" x 2" Heavy Duty Poly Urethane Casters)

EX. break-down: <b>CC</b>		<b>40</b>					-	<b>CD620U</b>	
Aluminum Enclosed Cabinet		Pan Capacity 18 x 26	Runner Spacing	Width	Depth	Height	Aluminum Enclosed Cabinet Options		
<b>CC</b>	Aluminum Enclosed Cabinet	<b>16</b>	16 Pan Cap.	1.5"	23"	28"	32"	<b>CD</b>	Clear Poly Carbonate Door
		<b>24</b>	24 Pan Cap.	1.5"	23"	28"	44"	<b>520U</b>	5" x 2" Poly-U Caster
		<b>32</b>	32 Pan Cap.	1.5"	23"	28"	56"	<b>620U</b>	6" x 2" Heavy Duty Poly Urethane Casters
		<b>40</b>	40 Pan Cap.	1.5"	23"	28"	70"	<b>COR</b>	Tamper proof Correctional Hardware, 6" x 2" Perma-TPR Wheels Upgrade
		<b>60</b>	60 Pan Cap.	1"	23"	28"	70"	<b>BK</b>	Locking Brakes (2)
								<b>B</b>	Corner Bumpers (w/ plate casters or solid base)
								<b>CB</b>	Continuous Bumpers
								<b>ODL</b>	Open Door Lock

*Multiple Options may be selected by writing each option code subsequently without dashes or spaces. For example, if you want a Cabinet with locking brakes and a solid base, you would write in the box below: CD620U*

### Build Your Aluminum Enclosed Cabinet Part Number

Select a code (in **BLUE**) from each category and fill in the boxes below. Use this Part Number when you order your Aluminum Enclosed Cabinet

<b>CC</b>		-	
<b>CC</b>		-	

Choice Equipment Company, Inc. warrants to the original purchaser that all of its goods and services sold shall be free of defect in material or workmanship during the twenty-four (24) months, twelve (12) months on wheels and casters, from the date of shipment or performance, provided the product has been used within the following restrictions:

1. The product was used for its intended purpose.
2. The product was properly handled, stored, installed, maintained and operated.
3. The product was not loaded beyond the product's load capacity.
4. The product is cleaned and maintained with a cleansing agent generally accepted by the industry and the instructions of the specific agent are followed.
5. Any abuse or misuse of, changes to, alteration of, or improper maintenance of original equipment shall void this warranty in its entirety.

If any product provided by Choice Equipment Company, Inc. shows defect in material or workmanship, CEC will, at its option, repair or replace the defective product if (1) CEC has received notice of such defects within the specified warranty period, and (2) upon CEC's request, the defective items is returned at CEC's cost to a location designated by CEC.