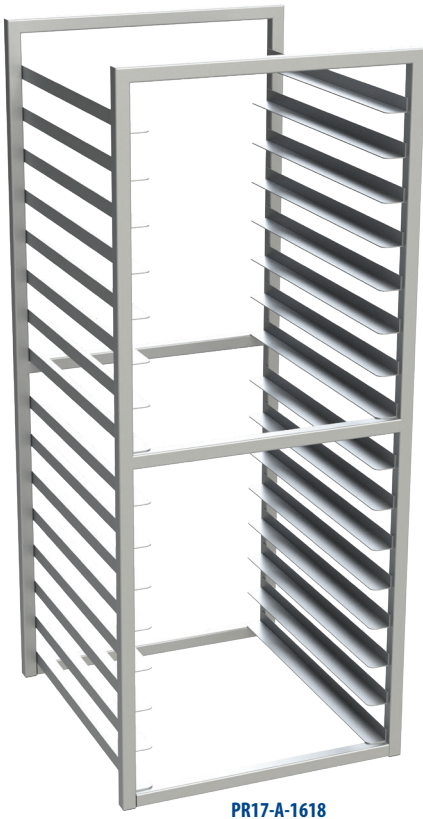
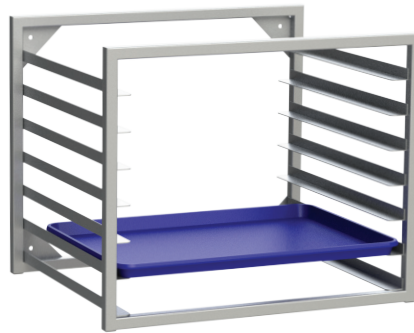


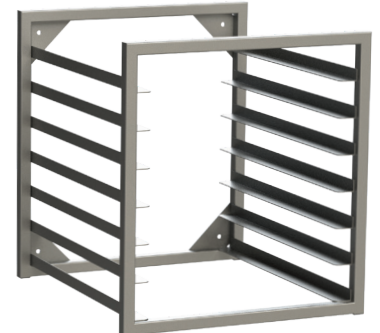
PR17 – INSERT PAN RACK (ALUMINUM/STAINLESS STEEL)



PR17-A-1618



PR17-A-726-W
with Wall Brackets



PR17-S-718-W
with Wall Brackets

Construction

- Heavy-Duty extruded 6063 aluminum alloy
- Available in 7, 11 or 16 Tray Capacity for 18" x 26" trays
- Upright frame is fully welded.
- Plastic caps installed in the bottom of each tubular upright.
- Fully welded frame for strength

Uprights & Cross Braces

- Frame is all welded 1" square tubular construction

Runners

- Tray runners are all aluminum and fully welded to the frame
- Each runner angle measures 1" x 1-½" x .078" thick

EXAMPLE: PR17-A-1618-W (Aluminum Insert Pan Rack, 16 Pan Capacity [3" Runner Spacing, 51"H] with Wall Brackets)

EX. break-down: PR17-A		-	16			18			-	W
Insert Pan Rack		18x26 Pan Capacity		Runner Spacing	Height	Pan Load Direction		Width	Depth	Insert Pan Rack Options
PR17-A	Aluminum Insert Pan Rack	7	7 Pan Cap.	3"	23"	18	Front Load	21"	23"	W Wall Brackets
PR17-S	Stainless Steel Insert Pan Rack	16	16 Pan Cap.	3"	51"	26	Side Load	28"	18"	
Build Your Aluminum or Stainless Steel Insert Pan Rack Part Number										
Select a code (in BLUE) from each category and fill in the boxes below. Use this Part Number when you order your Aluminum or Stainless Steel Insert Pan Rack										
PR17-A		-								-
PR17-S		-								-

Choice Equipment Company, Inc. warrants to the original purchaser that all of its goods and services sold shall be free of defect in material or workmanship during the twenty-four (24) months, twelve (12) months on wheels and casters, from the date of shipment or performance, provided the product has been used within the following restrictions:

1. The product was used for its intended purpose.
2. The product was properly handled, stored, installed, maintained and operated.
3. The product was not loaded beyond the product's load capacity.
4. The product is cleaned and maintained with a cleansing agent generally accepted by the industry and the instructions of the specific agent are followed.
5. Any abuse or misuse of, changes to, alteration of, or improper maintenance of original equipment shall void this warranty in its entirety.

If any product provided by Choice Equipment Company, Inc. shows defect in material or workmanship, CEC will, at its option, repair or replace the defective product if (1) CEC has received notice of such defects within the specified warranty period, and (2) upon CEC's request, the defective items is returned at CEC's cost to a location designated by CEC.